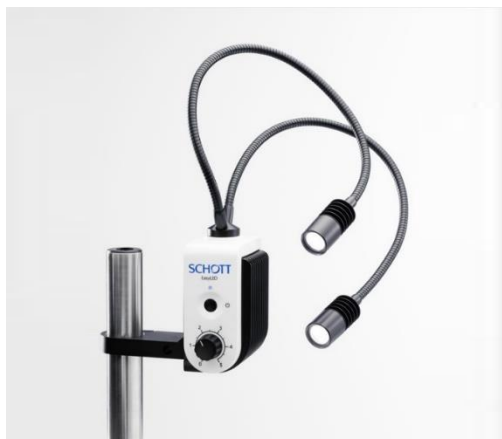


EasyLED Spot Lights

for stereo microscopy



EasyLED Spot Lights are available in two different versions: an individual spot light with a single light head (Spot Light Plus Single), and a double spot light with two light heads (Spot Light Plus Double). In addition, the two light heads of the Spot Light Plus Double can be controlled individually.

Features:

- Powerful light flux of 130 lm for each spot.
- Robust metal light head equipped with special cooling lamellae.
- Integrated controller.
- Mountable direct to the stand. Mounting brackets for all stands plus a standalone version are all available.

Advantages:

- Ergonomic design – the dimming control is ergonomically placed near the focus control of the microscope.
- Robust design for operation in demanding environments.
- For the Spot Light Plus Double, both spots can be switched individually.

Types and compatibility

General		Spot Light Plus Single	Spot Light Plus Double
Part No.		600.101	600.121
Dimensions – control unit (W x D x H)	(mm / inch)	Approx. 61 x 114 x 107 / 2.40" x 4.49" x 4.21	
Dimensions – Length Spot incl. Light Head	(mm / inch)	500 / 19.69	
Weight	(kg)	Approx. 0.5	Approx. 0.7
Cooling		Convection	
Electrical			
- Power supply unit -			
Operating voltage, frequency		100 – 240 V ~, 50 – 60 Hz	
Power consumption	(VA)	max. 6	
Protection class power supply		II	
Protection class light source		III	
Overvoltage category		II	
- Controller -			
Supply Voltage	(V)	5 DC	
Lamp type		High Power LED	
Lamp lifetime	(h)	50.000 ¹	
Lighting information			
Luminous flux	(lm)	130	
Color temperature	(K)	Appr. 5.600	
Light exit angle	(2 α_{eff})	Approx. 53°	
Certificates			
Conformity		CE, UKCA (power supply unit CE, UL, PSE)	
EMC-class		B	

¹ max. decline of light output to 70% of origin level

We provide a variety of accessories for our EasyLED Series. For details please refer to our system diagrams or according datasheets.



Dimensions

Spotlight Plus Single



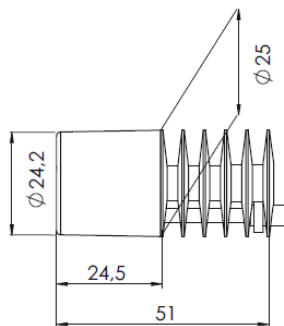
P/N: 600.101

Spotlight Plus Double



P/N: 600.121

Dimensions light head



Pictures are provided for illustration purposes only, and may not provide an accurate reflection of the actual product.

All specifications are subject to change without prior notice. This datasheet or any extracts thereof may only be used in other publications with express permission of SCHOTT. © SCHOTT North America, Inc.

Lighting and Imaging
SCHOTT North America, Inc.
122 Charlton Street
Southbridge, MA 01550, USA
Phone: +1-508-765-3211
Fax: +1-508-764-6273
info.microscopy@us.schott.com
www.schott.com/microscopy

SCHOTT
glass made of ideas