

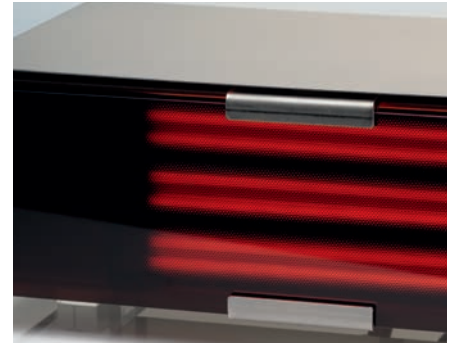
SCHOTT NEXTREMA® 712-3 – tinted

Black design and excellent heat output

NEXTREMA® 712-3 delivers a black design that fits into basically every environment, hiding the heating elements when switched off. When the heater is powered on the excellent transmission for radiant heat ensures a high heat output at minimal glare.

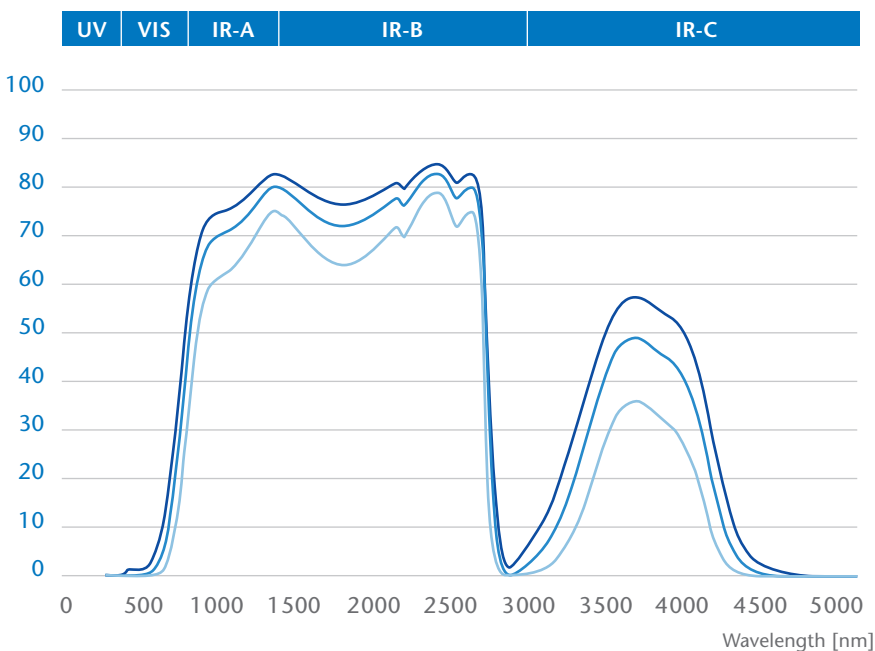
Material benefits

- High transmission in the IR-A and IR-B range
- Black design
- Hides the heating element when switched off



Overlay of NEXTREMA® transmission with heating element emission spectra

Transmission [%]



NEXTREMA® transmission curves

- NEXTREMA® 712-3
Thickness: approx. 3 mm
- NEXTREMA® 712-3
Thickness: approx. 4 mm
- NEXTREMA® 712-3
Thickness: approx. 6 mm

*Transmission graphs are based on data from individual measurements. Deviations may result from manufacturing process.

Material data sheets are available for download at:
www.schott.com/nextrema

SCHOTT
glass made of ideas

SCHOTT NEXTREMA® 712-3 – tinted

Appearance in combination with different heating elements

Short wave emitter

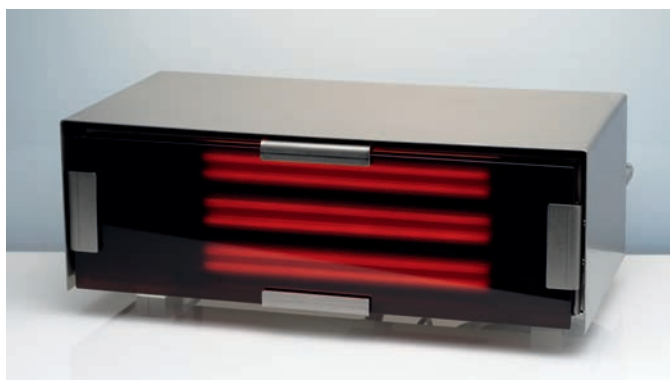


Short wave emitter & 712-3 – day view

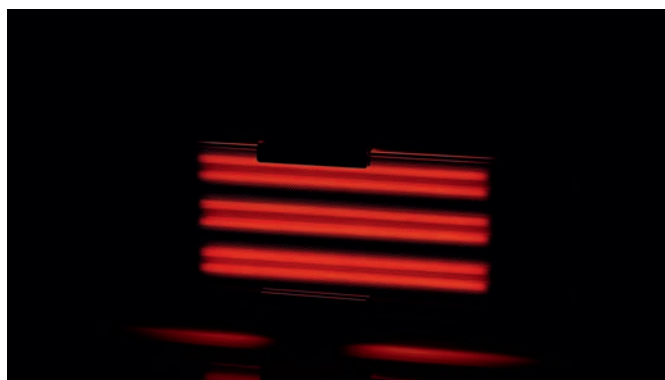


Short wave emitter & 712-3 – night view

Carbon emitter



Carbon emitter & 712-3 – day view

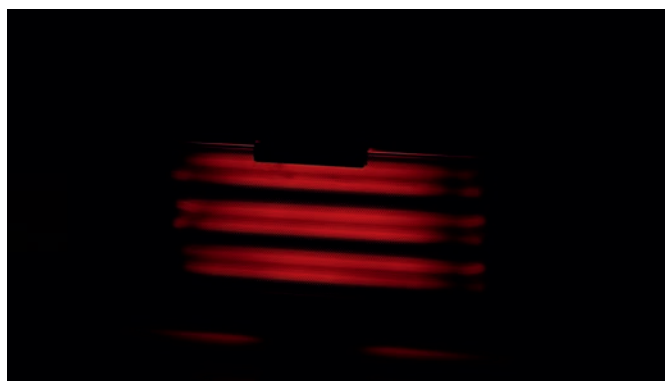


Carbon emitter & 712-3 – night view

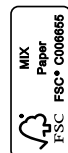
Medium wave emitter



Medium wave emitter & 712-3 – day view



Medium wave emitter & 712-3 – night view



80278 ENGLISH/US 03/2017 all/mno Printed in Germany

Home Tech
SCHOTT North America, Inc
5530 Shepherdsville Road
Louisville, KY 40228
USA
Phone (502)657-4417
Fax (502)966-4976
info.nextrema@us.schott.com

www.us.schott.com/nextrema

SCHOTT
glass made of ideas