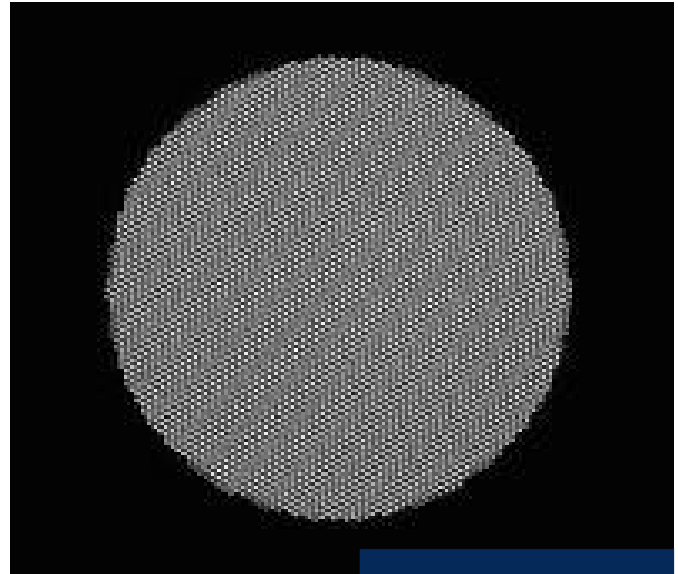


SCHOTT® Small Diameter Image Guides

Meeting market requirements for defect-free endoscopic imaging



SCHOTT® Image Guide



Close-up view of
SCHOTT® Image Bundle

Enlarged

When imaging hard-to-access locations, high-resolution flexible image bundles provide a unique solution. SCHOTT® Small Diameter Image Guides, also known as Leached Fiber Bundles (LFB), are commonly used in the medical, veterinary and industrial fields for simple and effective visualization and diagnosis. These image guides made of glass optical fibers are supplied to OEMs of endoscopes as well as to repair companies.

Main product advantages:

- From tight spaces to large area imaging, our range of diameters (from 0.45mm to 2mm) address many applications.
- Imaging resolution can be matched to intended requirements, with fiber counts from 4k to 18k possible (depending on the diameter).
- High quality design, materials and processing ensure that our quality meets or exceeds customer requirement.

SCHOTT's engineering team collaborates closely with our customers to design for a wide range of applications. We can offer highly customized and optimized solutions to meet your needs, including thin-walled sheathings, stainless-steel end tips, end coatings, fiber count/size, and more.

Your benefits:

- Maximum design flexibility
- Ease of handling and assembly
- Robust product that withstands thousands of articulations

To sum it up: we offer consistent quality and the widest variety of options in the industry.

SCHOTT
glass made of ideas

Bundle specifications

Bundle Diameter (mm)	Length (mm)	Quality Area Diameter (mm)	Pixel Count (k)	Distal Ferrule Diameter (mm) x Length (mm)	Proximal Ferrule Diameter (mm) x Length (mm)
0.45	1000	0.38	4.0	0.55 x 4.40	0.64 x 11.80
0.53	1000 & 1050	0.45	5.6	0.65 x 4.50	1.00 x 12.00
0.57	535 – 1000	0.45	4.5	0.77 x 5.00	1.05 x 15.00
0.70	535 – 1000	0.58	8.2	0.83 x 5.00	0.94 x 12.00
1.00	670 – 1000	0.80	13.5	1.27 x 5.10 1.16 x 5.00	2.03 x 13.50 1.60 x 10.00
1.05	760	0.90	18	1.22 x 5.60	1.22 x 12.80
1.10	485 – 895	0.90	18	1.27 x 4.00	1.45 x 13.50 2.03 x 13.50
1.2	520 - 880	1.05	18	1.38 x 4.00	1.60 x 10.00
1.3	545	1.15	18	1.42 x 5.00	1.42 x 14.00
1.65	1350	1.45	18	2.19 x 7.8	2.46 x 15.00

Notes:

Low temperature sterilization ~55°C (Sterrad, ETO, Peroxide) is recommended. Not suitable for high temperature sterilization, such as dry heat or autoclave.

Our services

As a truly unique organization, SCHOTT is globally recognized for its glass material research and manufacturing expertise. We deliver vertically integrated services, including direct sales and customer support.

This raises the comfort level for our customers, allowing them direct access to the glass manufacturer as well as its technical, manufacturing, and administrative resources.

With qualified manufacturing sites in Southbridge, Massachusetts (USA), and Amatlán de los Reyes, Córdoba (Mexico), we offer dual source production, enabling stable supply to our customers.

schott.com

SCHOTT AG, Hattenbergstrasse 10, 55122 Mainz, Germany
Phone: +49 (0) 6131/66-0, lightingimaging@schott.com

SCHOTT
glass made of ideas