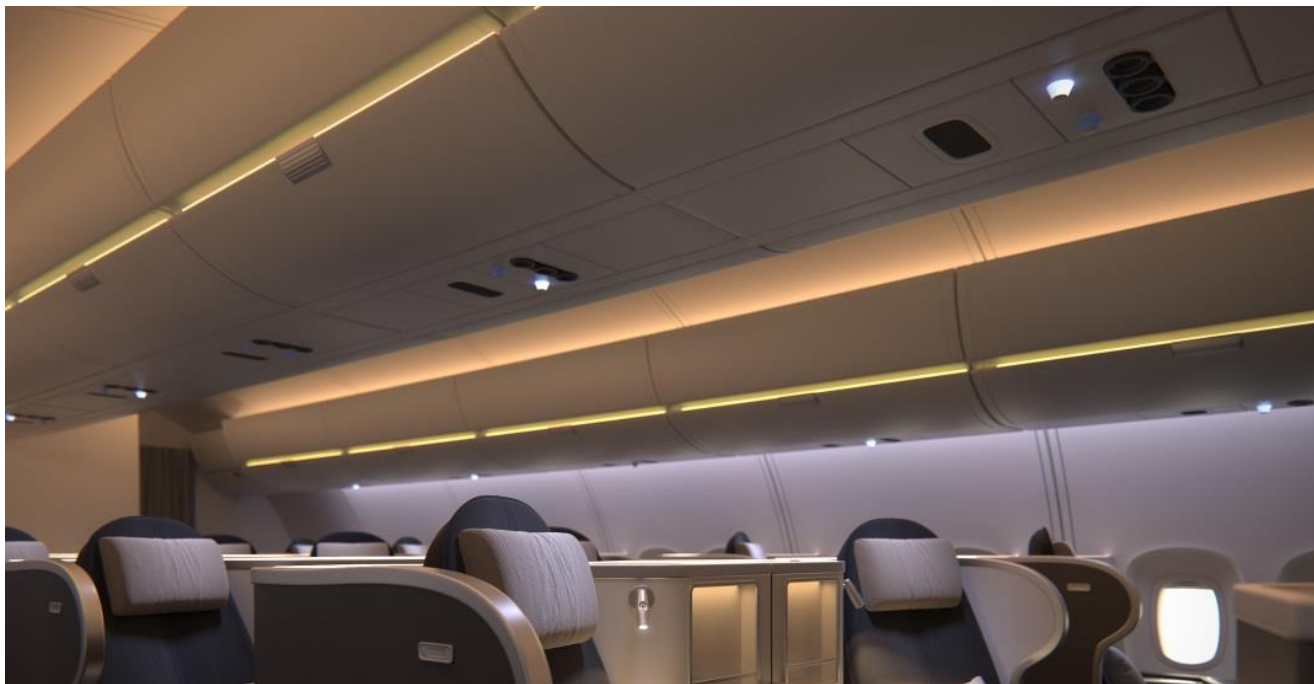


SCHOTT® HeliIntense

Strong and efficient LED light source



Product Characteristics

The SCHOTT® HeliIntense light source is an efficient and very strong LED light source that was developed specifically to combine SCHOTT's expertise in fiber optics with LED technology to provide customized and ultimate cabin lighting.

Compared to the SCHOTT® HeliBasic II, it can be controlled in different ways, what makes it suitable for any customer demand.

The SCHOTT® HeliIntense technology can either be used as LED light source or LED spot.

The technology is qualified for all major passenger aircraft.

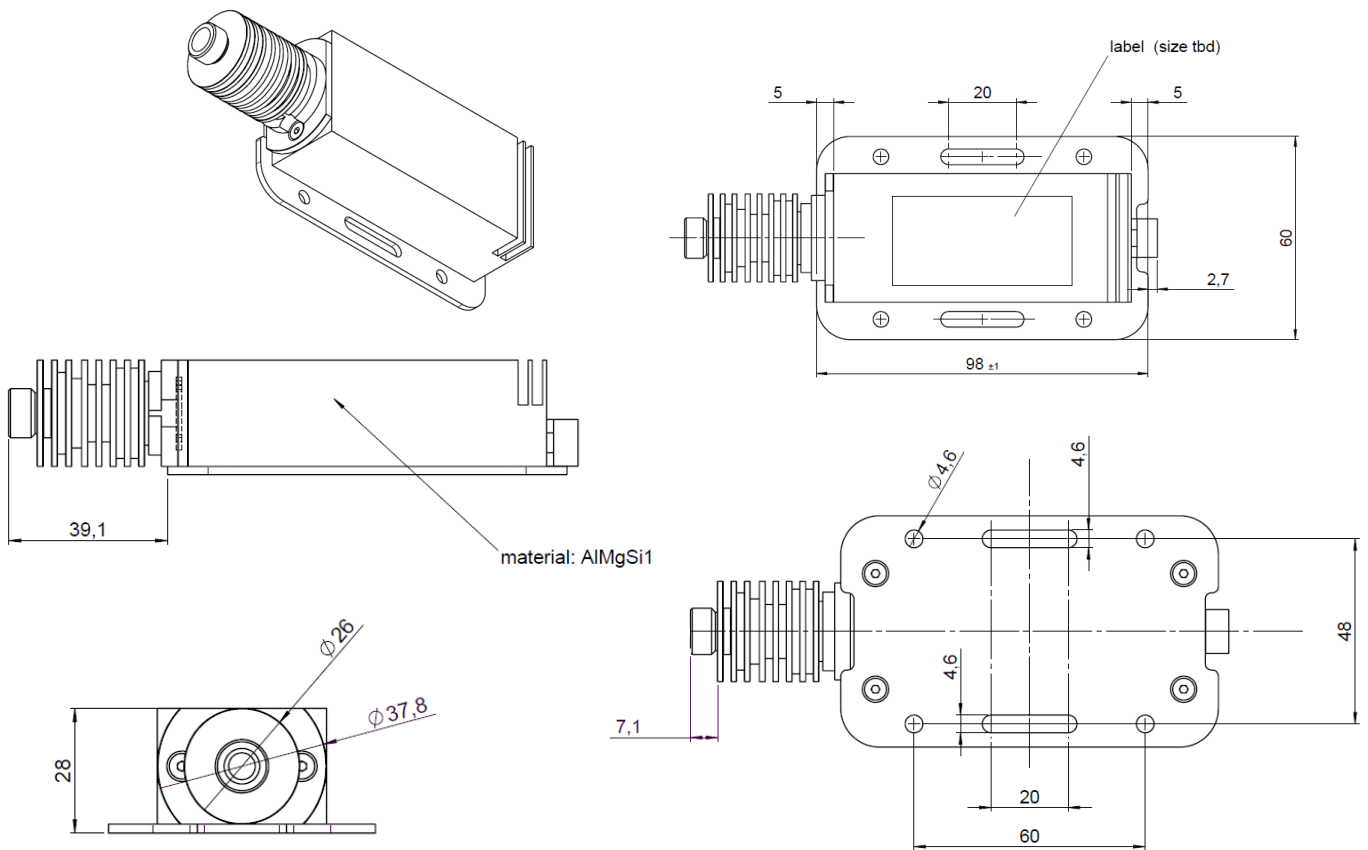


SCHOTT® HeliIntense

Recommended Applications

- Various spots in seats or monuments realized with one light source and SCHOTT® HeliFlex
- Flat and slim shell mounted Reading Lights
- Functional cabin lighting realized as spot or line lights
- Homogeneous Moodlighting realized with SCHOTT® HeliLine

Technical Specifications	
Power input	12 – 28 VDC, 28 VDC board voltage
Power consumption	max. 4.5 W
Control	<ul style="list-style-type: none"> • External switch • RS485 • PWM
Control features	On / Off / Dimming
Color	Standard: white (other single colors possible)
Address selection	Daisy chain concept
Max. weight	200 g
Available color temperatures	<ul style="list-style-type: none"> • 2700 K (\pm 600 K) • 3000 K (\pm 600 K) • 4000 K (\pm 600 K) • further and other colors on demand



All specifications are subject to change without prior notice. This datasheet or any extracts thereof may only be used in other publications with express permission of SCHOTT. © SCHOTT AG

Lighting and Imaging
SCHOTT AG
 Hattenbergstrasse 10
 55122 Mainz
 Germany
 Phone: +49 (0) 6131/66-7914
 Fax: +49 (0) 6131/66-7850
 lightingimaging@schott.com
 www.schott.com/lightingimaging

