

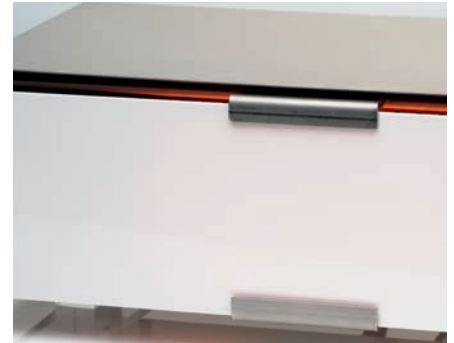
SCHOTT NEXTREMA® 724-8 – opaque white

Pure white design and even light diffusion

NEXTREMA® 724-8 hides the heating element when switched off. When the heater is switched on the material evenly diffuses the visible light over the glass-ceramic surface and still an abundance of radiant heat. Invisible heaters blend seamlessly – eg. a bathroom is only one of many potential application ideas.

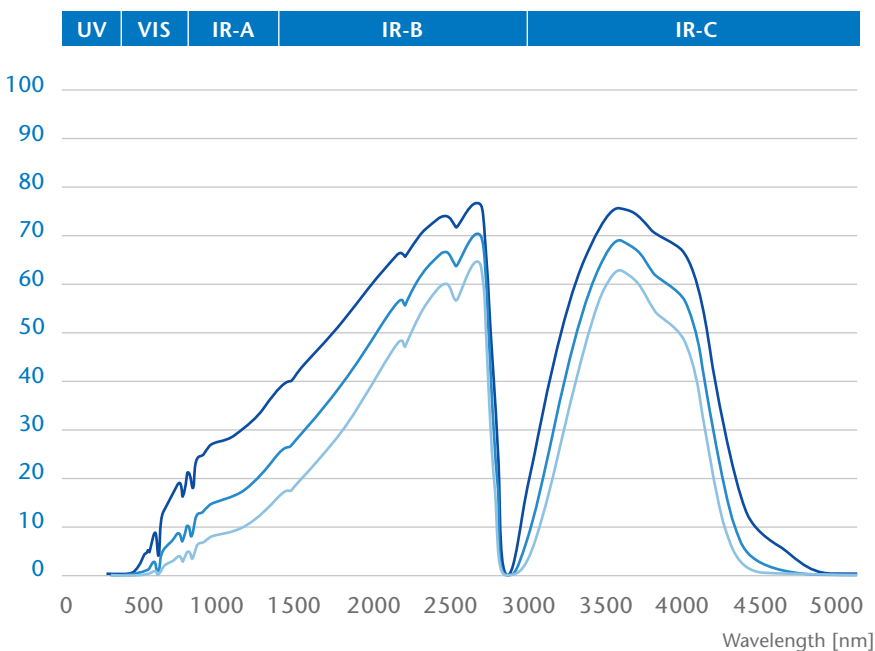
Material benefits

- High transmission in the IR-B and IR-C range
- Pure white appearance and even light diffusion
- Easy to clean and highly chemical resistant surface



Overlay of NEXTREMA® transmission with heating element emission spectra

Transmission [%]



NEXTREMA® transmission curves

- NEXTREMA® 724-8
Thickness: approx. 2 mm
- NEXTREMA® 724-8
Thickness: approx. 3 mm
- NEXTREMA® 724-8
Thickness: approx. 4 mm

*Transmission graphs are based on data from individual measurements. Deviations may result from manufacturing process.

Material data sheets are available for download at:
www.schott.com/nextrema

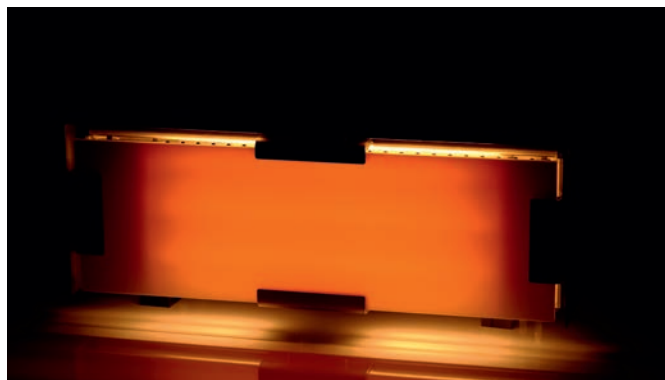
SCHOTT NEXTREMA® 724-8 – opaque white

Appearance in combination with different heating elements

Short wave emitter

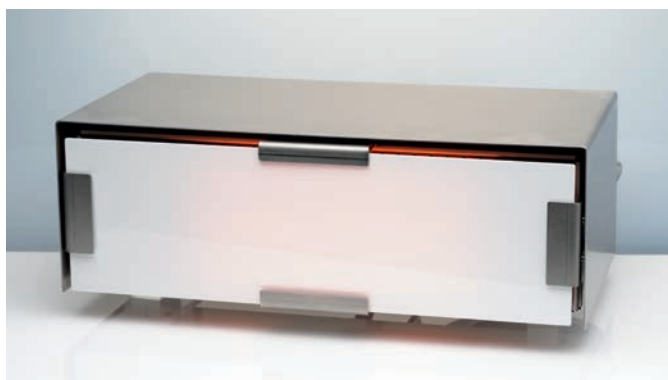


Short wave emitter & 724-8 – day view

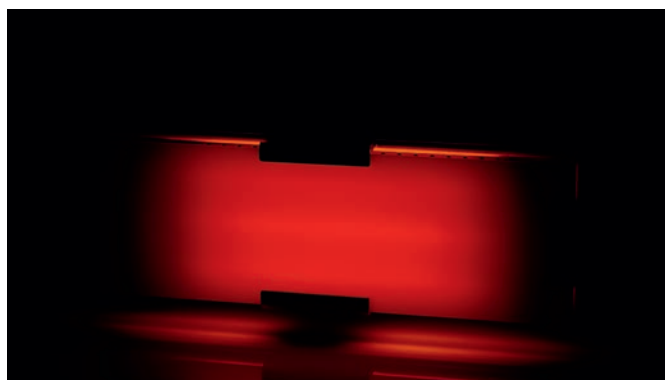


Short wave emitter & 724-8 – night view

Carbon emitter



Carbon emitter & 724-8 – day view

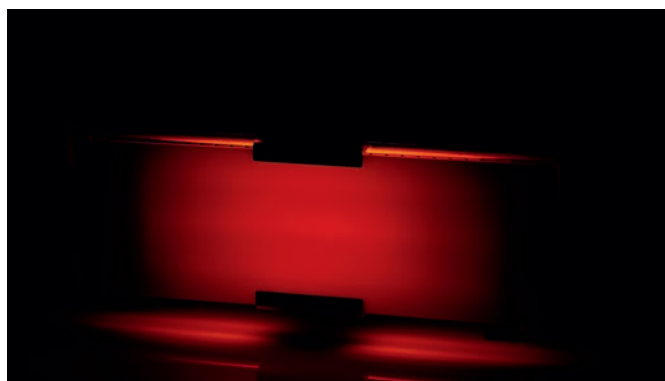


Carbon emitter & 724-8 – night view

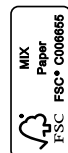
Medium wave emitter



Medium wave emitter & 724-8 – day view



Medium wave emitter & 724-8 – night view



80283 ENGLISH/US 03/2017 all/mimo Printed in Germany

Home Tech
SCHOTT North America, Inc
5530 Shepherdsville Road
Louisville, KY 40228
USA
Phone (502)657-4417
Fax (502)966-4976
info.nextrema@us.schott.com

www.us.schott.com/nextrema

SCHOTT
glass made of ideas